



Maple Creek School News

Volume 3, Issue 2

Oct. 2014



Maple Creek School Students Explore Sequoia Park and Zoo

On Sept. 26, the students rode the bus to Eureka for their first field trip of this school year. They explored the barn area, making friends with the goats and learning about other farm critters. They then roamed through the zoo. The new otter exhibit delighted everyone.

Inside this issue:

Classroom Activities	2-3
Dental Hygiene Month	4
Attendance is Important	5
Donations Request	6
Recycling Program	7
Calendar	8

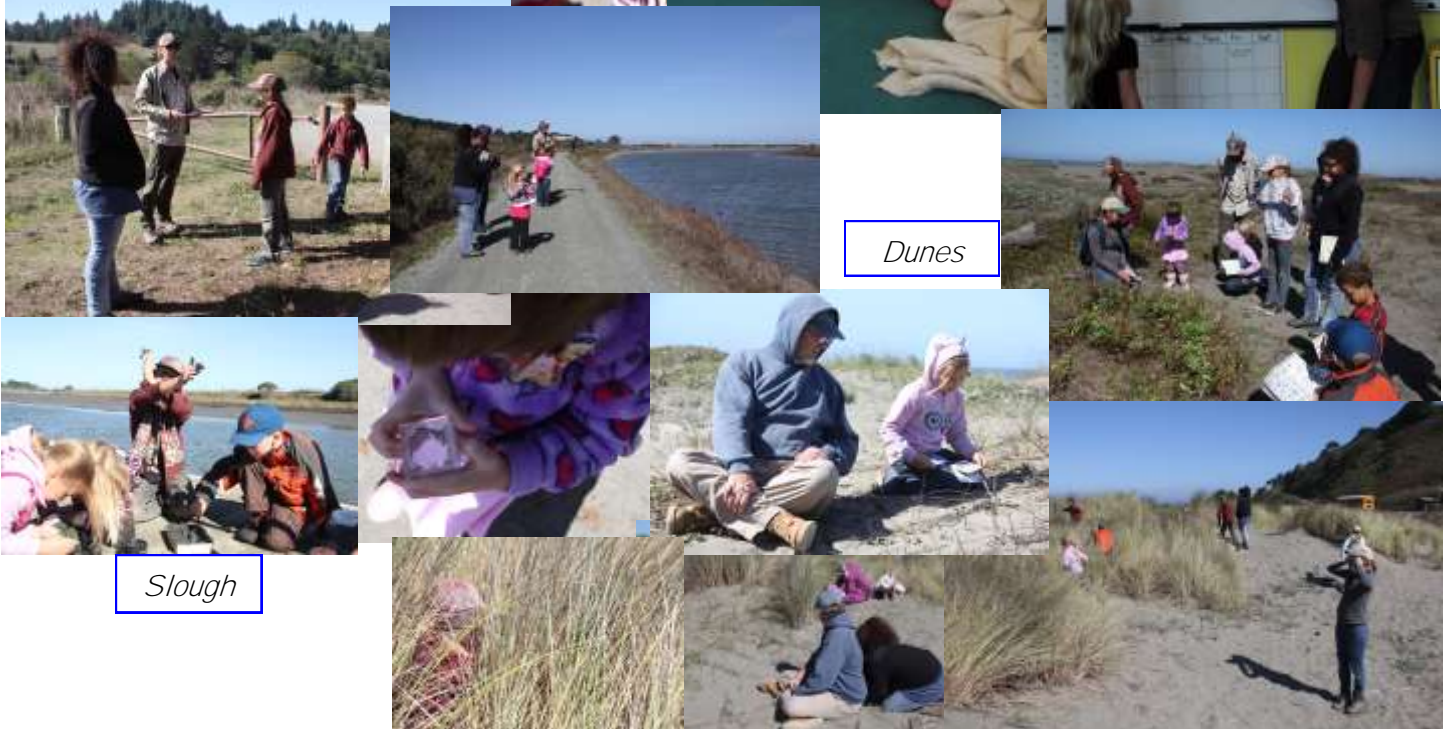
Bay to Dunes Experience

To enhance the classroom studies of communities and plant growth and development, Maple Creek School took advantage of an awesome field trip opportunity sponsored by the Friends of the Dunes. The outdoor experience began the day before with an interactive classroom lesson designed to give the students an idea of what they will do and see on the field trip. The students then rode the bus to the Mike Thompson Wildlife Area on Hookton Slough. They engaged in hands-on activities that led to discoveries about the **slough habitat and then compared life on the slough to life on the dunes at the ocean's edge**. According to an informal survey at the end of the day, most of the students especially enjoyed looking closely at the invertebrates found in the waters where the rivers meet the bay and playing "Predator/Prey" in the European beach grass on the dunes.

Classroom



Dunes



Slough

Pumpkins Delight Students

With many thanks to the Arcata Coop and Warren Creek Farms, each student of Maple Creek School received a pumpkin of his or her choosing. We also thank Dr. Garry Eagles and the Humboldt County Office of Education for paying the transportation costs for this experience. The Olders and the Youngers alike love this annual field trip. The educational aspect of the experience greatly enhanced our classroom studies of plant growth and development by learning about the cycle of growing pumpkins. It also contributed to our lessons on communities by learning about how the

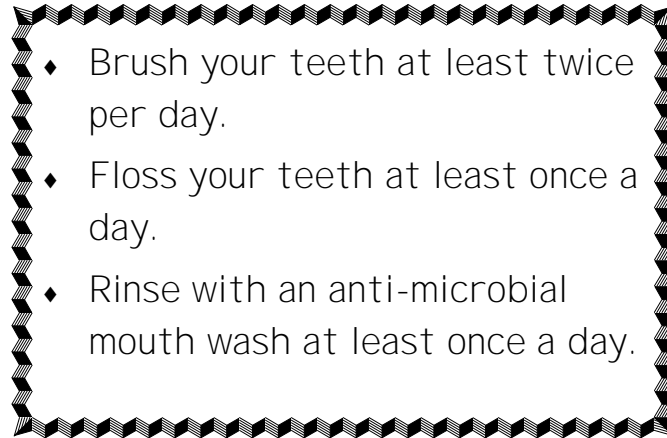
Coop and Warren Creek Farms work together to provide the trip to most schools in Humboldt County.



October is National Dental Hygiene Month

Adapted from www.ADHA.org and Vim & Vigor Newsletter

Did you know that good dental hygiene is an important part of your overall health? There are three basics involved in good oral healthcare: brushing, flossing, and rinsing.



- Brush: Two minutes, two times each day

Research shows that brushing for two minutes is the single most important method for reducing plaque and preventing cavities, gingivitis and other plaque-related diseases. Brushing for two minutes twice a day is crucial to maintaining healthy smiles.

- Floss: Floss daily

Flossing removes plaque and food particles that cannot be reached by a toothbrush, particularly under the gumline and between the teeth. Failure to do so can lead to tooth decay and gum disease.

- Rinse: Use an ADA-approved mouth wash at least once per day

Rinsing your mouth with an anti-microbial mouth wash each day adds to the preventive maintenance of your oral health. Be sure to keep these mouth washes out of reach of children, though.



Absences

Add up!

#SCHOOLEVERYDAY

**Missing just 2 days a month
means a child misses 10% of the
school year.**

RUPERT GANZER

If your child is ill, particularly with a contagious disease, by all means, keep him/her home. Otherwise, SEND YOUR CHILD TO SCHOOL, PLEASE.



Donations Requested

Maple Creek School students and staff would greatly appreciate help from the community in the form of the following donations:

◇ Food for school lunches

- ~ canned soups
- ~ refried beans
- ~ fresh fruits and vegetables (*many thanks to our local farmers for the recent tomatoes, cucumbers, and pears*)
- ~ canned vegetables (corn in particular)
- ~ canned tuna and/or chicken
- ~ crackers

* Supplies for the classrooms and special occasions

* Shoeboxes

* Brown paper bags

* Cheap prizes for the Fall Celebration Extravaganza (either Ancient Egypt-themed or Halloween-related) *Need these before October 31*

- ~ Mini palm trees
- ~ Old but clean white/bleached sheets

Recycling at Maple Creek School

In an attempt to raise money for educational needs and environmental awareness in one project, we have set up recycling bins for your beverage containers. We request that you bring ONLY plastic and glass beverage containers and aluminum cans that have the CA CRV symbol for recycling. We can only handle these ones redeemable for cash.



Please bring your donations to the school on Tuesdays and Fridays. Bill Carlson will direct you to the recycling area where you will sort your items into the appropriate garbage cans:

- ◆ Aluminum
- ◆ Plastic #1 (water and soda bottles)
- ◆ Plastic #2-7 (these are less commonly accepted for redemption, but if you see the CA CRV symbol on the bottle, donate it!)
- ◆ Green glass
- ◆ Brown glass
- ◆ Clear glass

The MCS Fundraising Committee, students and staff thank you for your participation in this new program.



www.calrecycle.ca.gov

October 2014

Sun Mon Tue Wed Thu Fri Sat

			1	2	3	4
5	6	7	8	9	10	11
12	13	14	15	16	17	18
19	20	21	22	23	24	25
26	27	28	29	30	31	

Schedule of Events

Happening in Oct.

- ☺ Oct. 3 Pumpkin Patch Field Trip
- ☺ Oct. 6: Picture Day/Wear Blue for Anti-bullying Awareness
- ☺ Oct. 16: California Shakeout
- ☺ Oct. 20—24: Red Ribbon Week
- ☺ Oct. 29: School Board Meeting 2 PM
- ☺ Oct. 31: Fall Performance and Carnival

Looking Ahead:

- ☺ Nov. 10 & 11: No School for **Staff Development & Veteran's Day**
- ☺ Nov. 17: SSC, SAC, DAC, MCFC Meetings begin at 2:30 PM
- ☺ Nov. 19: School Board Meeting 2 PM
- ☺ Nov. 24—28: No School for **Thanksgiving Week**

Please attend the school board meeting on Oct. 29 at 2 PM to hear the latest school news.



School Site Council and Fundraising Committees

Please join the School Site Council/Fundraising Committee and/or attend the meeting on Nov. 17 at 2:30 PM.

The School Site Council needs YOU!

Please consider becoming a member of this VERY IMPORTANT committee for the 2014-2015 school year. To volunteer or for more information, contact Wendy or Gwen.

Maple Creek
Elementary School
District

15933 Maple Creek Route
Korbel, CA 95550

Phone: 707-668-5596

Fax: 707-668-4132

Providing exemplary education that fosters
communication, trust, and respect.

Maple Creek School is a necessary small school with an approximate enrollment of 12 students (K-8). The school is nestled in the Maple Creek and Mad River Valleys east of Arcata, surrounded by pastureland, forest, and mountains. The area is sparsely settled and accessible from Blue Lake, about a 35-minute drive and from Eureka, about a 50-minute drive. The Maple Creek School teachers are a committed and dedicated staff that provides a quality instructional program for the students. The secretary, custodian and bus driver all take an active interest in the students, which adds to the close, personal relationships among the kids, school and the community.

